

**PROPOSED CLASSIFICATION**  
**OF INLAND WATERS**

**as**  
**RECREATIONAL FISHERIES**  
**in the**  
**NORTH EAST and GOULBURN**  
**CATCHMENT MANAGEMENT REGIONS**  
**of VICTORIA**

***Executive Summary***

**By**



**and the**



**August 2009**

*Following the commitment by the Victorian Government in the 2006 State election to work with angling groups to classify all inland waters in Victoria, and as the original proponents of classification, the Australian Trout Foundation (ATF) and Native Fish Australia (NFA) entered into dialogue with Fisheries Victoria and the then recreational fishing peak body, "VRFish", to perform the classification.*

*As a result, the Victorian Inland Waters Classification Model, (a directional guide for such classification) was developed and it was proposed that all waters be classified into one of three categories namely salmonid, native or mixed fisheries in order to determine the primary focus for the ongoing management of those waters as recreational fisheries.*

*This model has now received Ministerial approval and is to be adhered to in such classification.*

*Within this model, it was recognised that some specific considerations would apply and these have been acknowledged in the proposed classifications endorsed by the Australian Trout Foundation and Native Fish Australia.*

*As a result we are pleased to present the following summary.*

NFA, with ATF endorsement, has prepared a draft classification of all streams in the north east of the state (comprised of the North East and the Goulburn Catchment Management areas) for consideration by all angling groups and government agencies. The express intent is to develop a long-term vision of how individual waters in the north east of the state should be managed as recreational fisheries.

NFA's and the ATF's long term vision for north east Victoria is that most lowland waters will support fisheries based on Murray cod, golden perch, silver perch and catfish and in some instances redfin, trout cod and Macquarie perch. Most waters in the foothills will support mixed fisheries providing angling for native fish, redfin and trout though in the middle Ovens and Goulburn Rivers it is proposed that the long-term vision is to develop these waters as dedicated fisheries for trout cod, Murray cod and Macquarie perch. Most waters in the uplands will be managed as salmonid fisheries though a number are important for native fish conservation and should be managed as mixed fisheries.

Some mixed fisheries will exist primarily for the purpose of recreational angling and be potentially supported by stocking of both native fish and salmonids. In some streams there will be overlap zones between downstream populations dominated by native fish and those upstream dominated by trout. A few of these may be areas of important conservation value for native fish and as trout fisheries in these waters are derived from natural spawning and recruitment they should not be stocked to maintain the equilibrium of the mixed fishery. Additionally, a very small number of waters need to remain 'unclassified' for recreational fishing purposes, as their primary function is for conservation and while they might provide some angling this is clearly of secondary importance.

The draft classification will be open for public comment until the 30 September 2009 after which submissions will be reviewed and appropriate changes made. Once finalised, the classification will be proposed by the ATF and NFA to DPI for adoption as the official inland waters classification of the north east of the state.

Broadly speaking the ATF and NFA proposes that the following key classifications be implemented:

- In the upper Murray catchment the Cudgewa Creek downstream of Cudgewa to be managed for native fish and other waters to be managed as mixed or salmonid fisheries.
- In the Mitta Mitta catchment Lake Dartmouth, the Mitta Mitta River upstream from the dam to Hinnomunjie and the river downstream of Tallandoon to be managed as mixed fisheries with most other waters being managed as salmonid fisheries.
- In the Kiewa catchment the Kiewa River downstream of Gundowring to be managed for native fish, the river upstream to Mongans Bridge to be managed as a mixed fishery and most other waters as salmonid fisheries.
- In the Ovens catchment the Ovens River below Myrtleford, the King River below Edi and the lower Buffalo River are proposed to be managed for native fish. The Ovens River between Myrtleford and Porepunkah, the King river between Edi and William Hovell Dam, the Buffalo River upstream of Buffalo Dam, Lakes Buffalo and William Hovell to be managed as mixed fisheries. All streams upstream of these areas to be managed as dedicated salmonid fisheries.
- In the Broken catchment all waters downstream of Benalla to be managed for native fish, most waters upstream of Benalla to be managed as mixed fisheries and the upper Ryans Creek to be managed as a salmonid fishery.
- In the Goulburn catchment it is proposed that most waters upstream of the King Parrot Creek be managed as salmonid fisheries with the exceptions of Lake Eildon, the lower Delatite, lower Jamieson and lower Yea Rivers and the lower King Parrot Creek, which should be managed as mixed fisheries. Downstream of the King Parrot Creek most waters to be managed for native fish. Headwater streams containing populations of the Barred galaxias and the upper Seven and Hughes Creeks are proposed to be unclassified due to their conservation significance. NFA with ATF support intends to propose the development of a recreational fishery for trout cod and Macquarie perch in the Trawool area, supported by ongoing stocking if necessary, as an alternative to modifying the thermal regime of cold water releases from Eildon Dam.”

*For further information and a more comprehensive explanation of the classification process applied, please refer to the Native Fish Australia Classification document attached.*

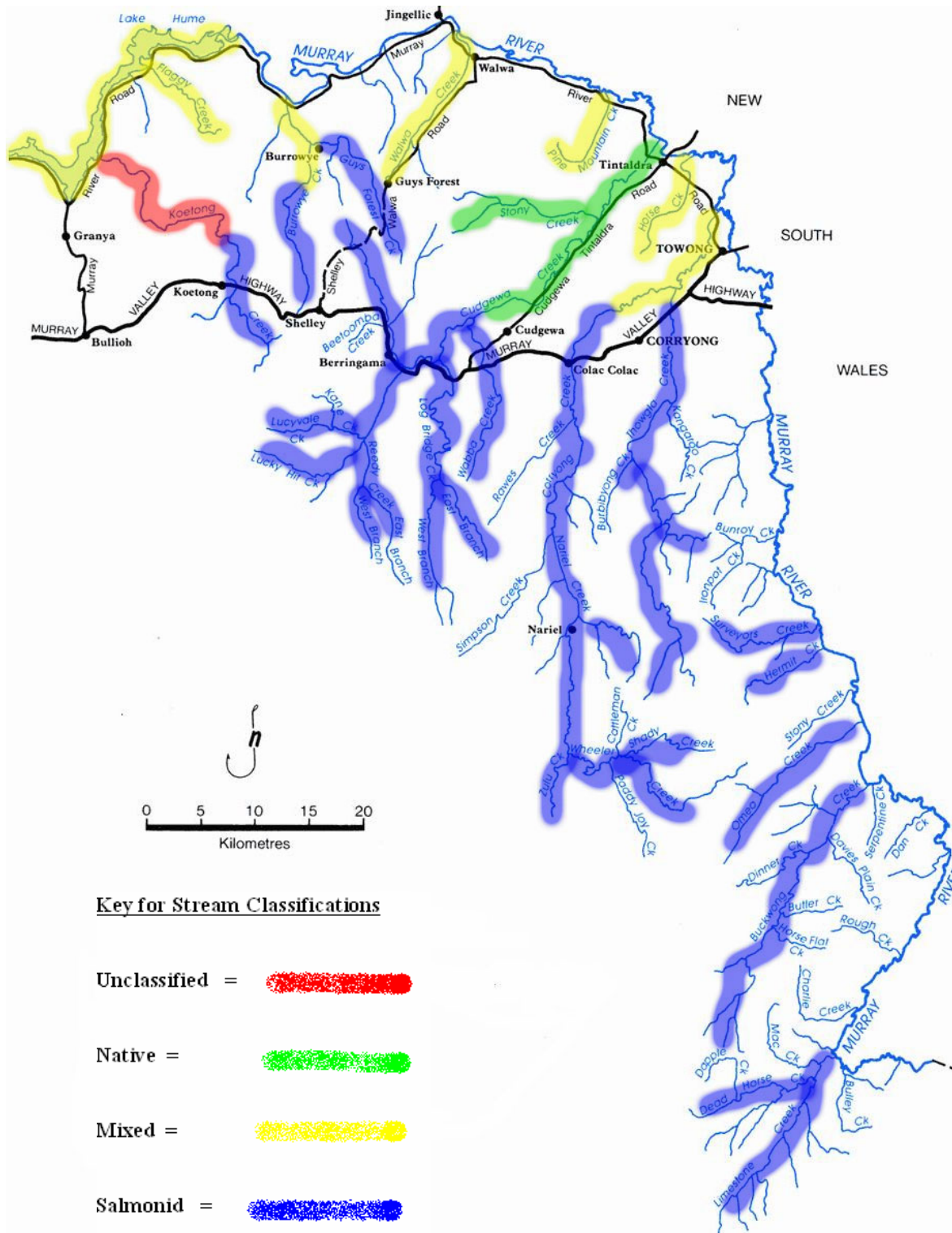
*Thank you,*

*Australian Trout Foundation  
and  
Native Fish Australia (Victoria)*

*“Working together for the betterment of all Victoria’s inland fisheries.”*

**DRAFT**

**Proposed Classification of Streams in the Upper Murray Catchment**

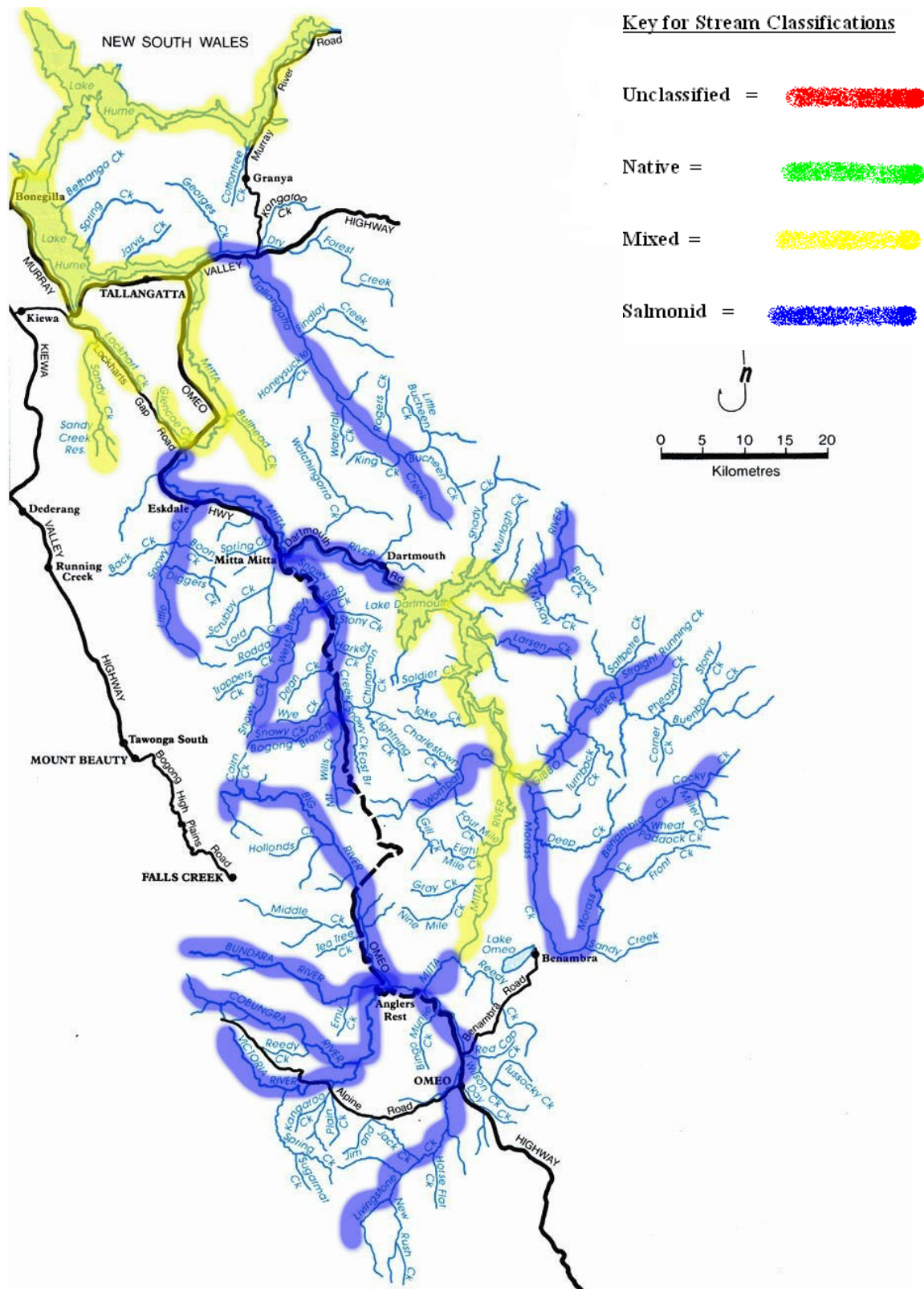


See pages 15-20 in the Draft NE Classification for further details



**DRAFT**

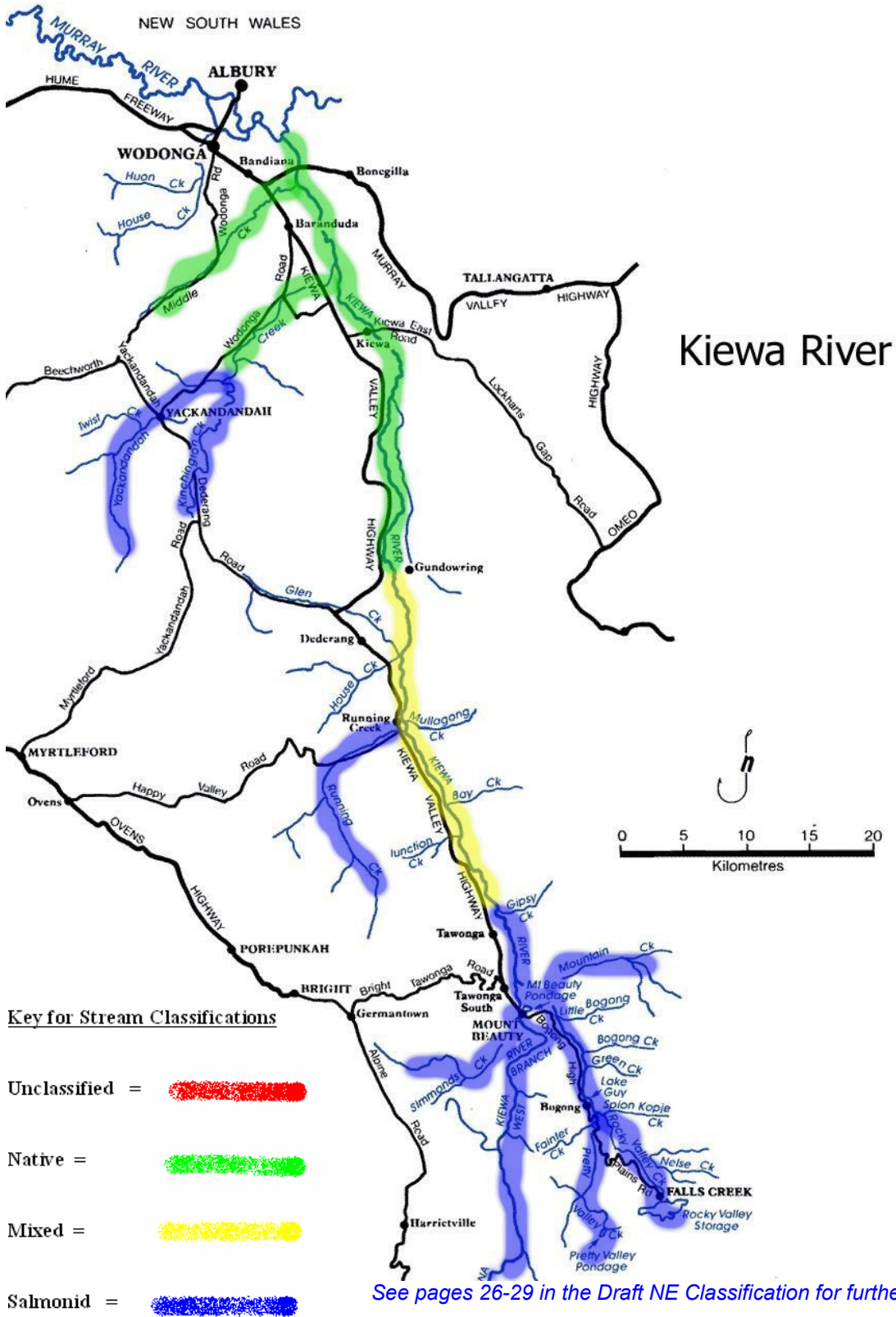
**Proposed Classification of Streams in the Mitta Mitta Catchment**



See pages 21-25 in the Draft NE Classification for further details

**DRAFT**

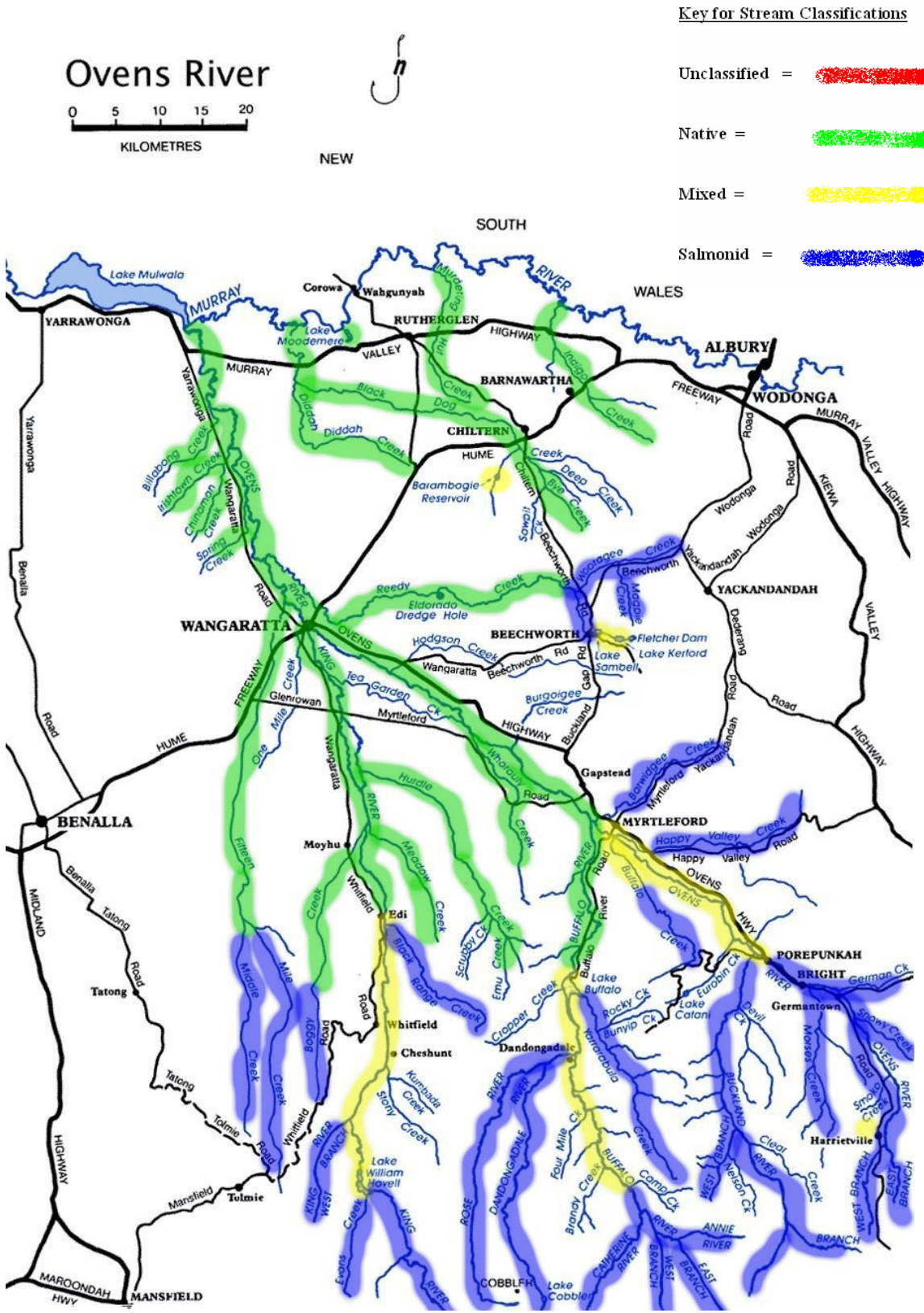
**Proposed Classification of Streams in the Kiewa Catchment**





**DRAFT**

**Proposed Classification of Streams in the Ovens Catchment**




See pages 30-38 in the Draft NE Classification for further details

**DRAFT**

**Proposed Classification of Streams in the Broken Catchment**

Key for Stream Classifications

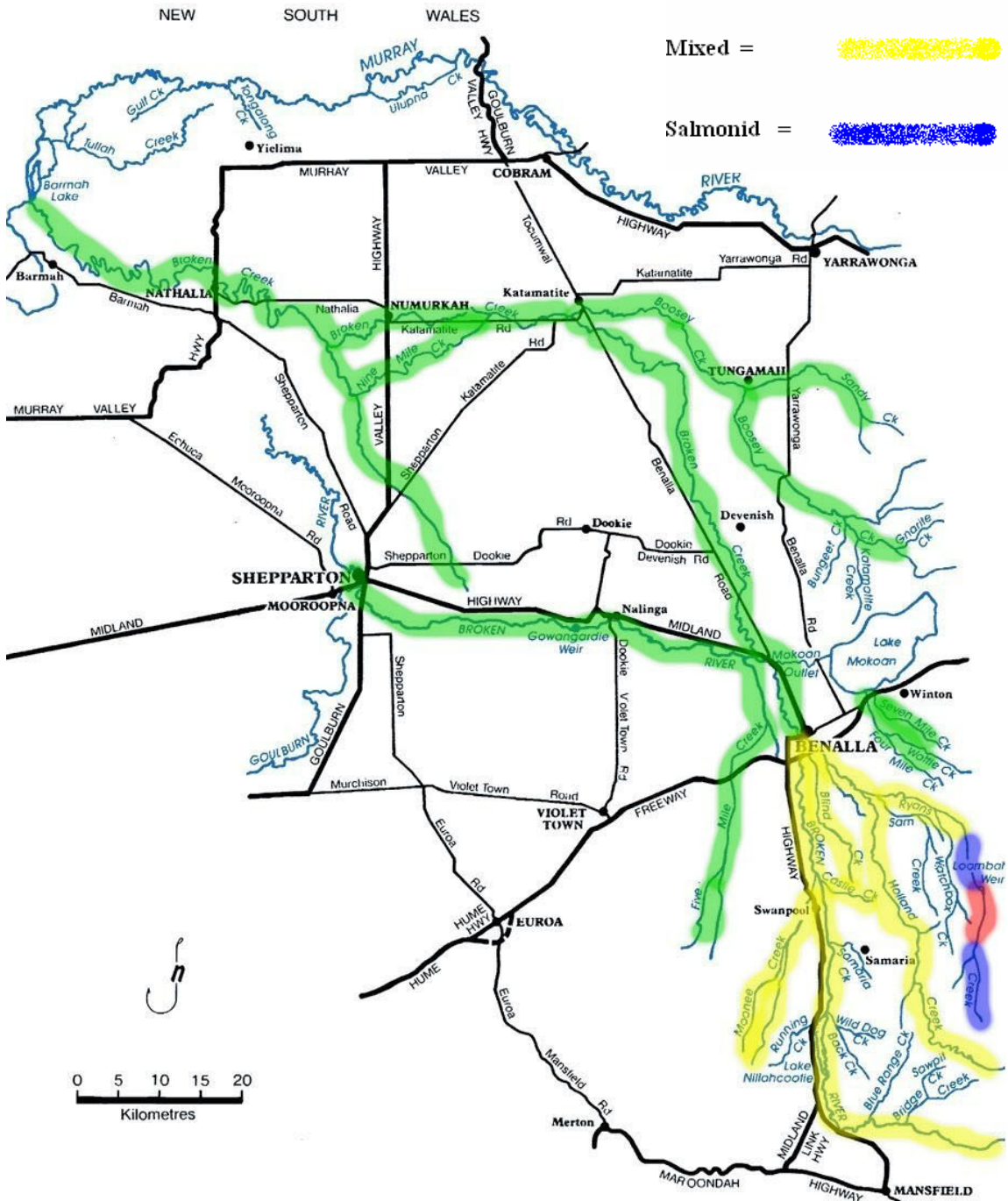
Unclassified = 

Native = 

Mixed = 

Salmonid = 

**Broken River**

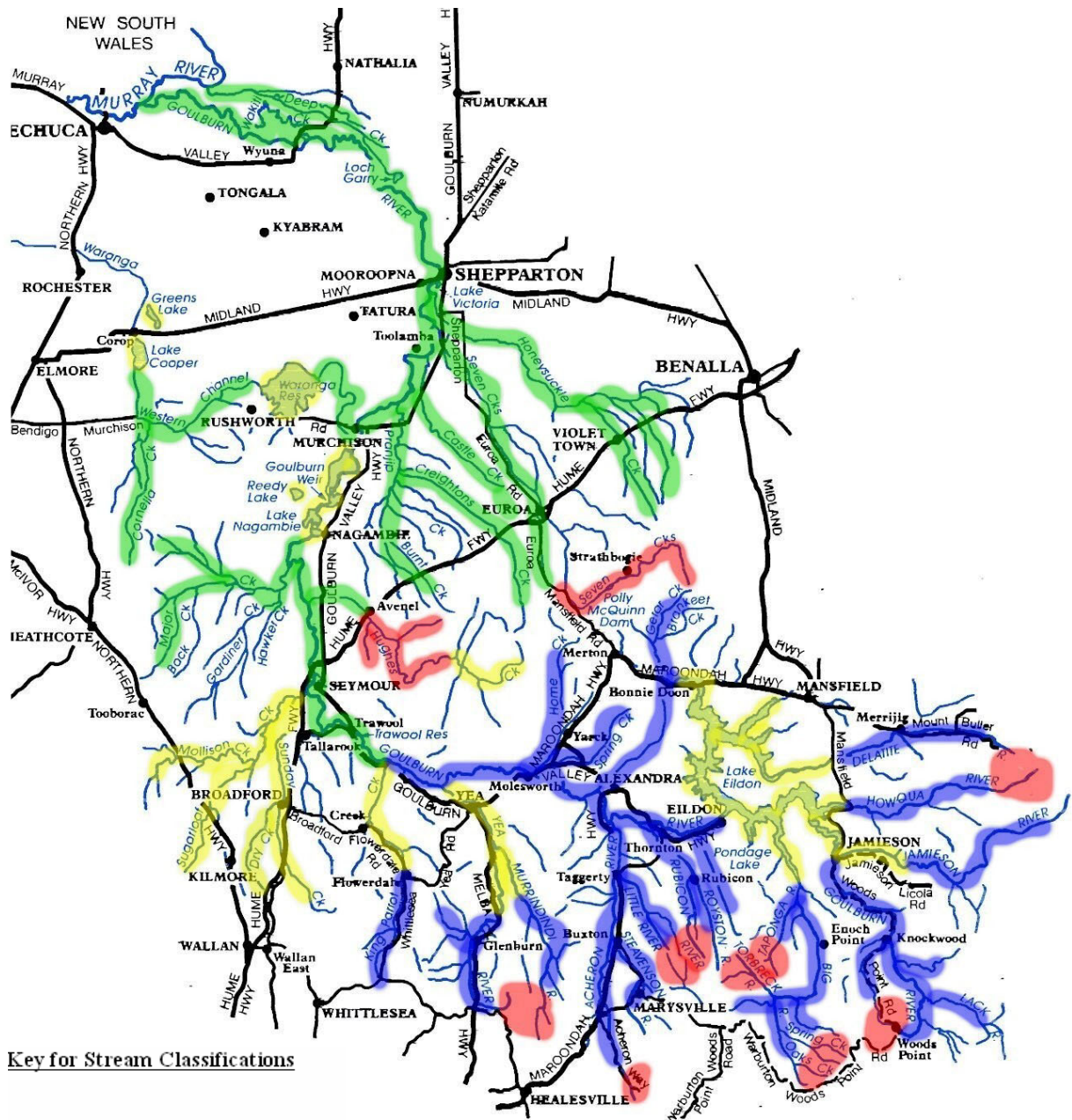


See pages 39-43 in the Draft NE Classification for further details



**DRAFT**

**Proposed Classification of Streams in the Goulburn Catchment**



**Key for Stream Classifications**

- Unclassified =
- Native =
- Mixed =
- Salmonid =

See pages 44-52 in the Draft NE Classification for further details